

TYCO

Tyco Toys
Spring 1994

Cadillacs AND DINOSAURS™

As advertised on



Enter a world where the future meets the past — the world of Cadillacs and Dinosaurs™! It's a world gone mad, where Dinosaurs of the Earth's prehistoric past coexist with men and women of the future and Cadillacs race with Woolly Mammoths. Evolution has spun out of control and humanity is in a desperate struggle for survival. Based on the exciting new network TV show and the popular comic book series, Cadillacs & Dinosaurs is destined to be one of the hottest male action hits of 1994!



Figure Assortment No. 1302

New

Standard Pack: 24
Carton Weight: 10 lbs.
Cube: 1.4
Package Size: 8" x 11" x 1 1/2"



Mustapha Cairo
New

Mustapha Cairo is Jack's chief engineer and best friend. When Jack is in trouble, it's Mustapha to the rescue with his powerful weapon, the Mustapha Blaster. Mustapha and Jack have been in many tight situations together, and in one battle Mustapha lost his leg — he now has a mechanical leg which hasn't slowed him down one step. Mustapha comes packed with Mustapha Blaster weapon and missile, as well as his Wrench Weapon.



Jack "Cadillac" Tenrec
New

Jack is part scholar, part fighter, part mystic and all hero. Jack can be seen freeing animals from traps and spends his time fighting the evil Poachers led by "Hammer Terhune." Jack can also be found inside his amazing high-tech garage that is fueled by volcanic power. He restores ancient machines, his favorite being his 1950's Cadillac. Jack is outfitted in rugged attire and is packed with his trusted weapon, the Nitro Express, along with 2 Nitro missiles for extra firepower.

Jungle Fighting Jack Tenrec
New

Jungle Fighting Jack Tenrec comes attired ready for battle against the Poachers. Jack must fight these villains in order to stop them from killing dinosaurs and destroying the farmers' villages. He's packed with his powerful Harpoon Bolo with attached Land Mine, the perfect weapon for ambushing a mob of evil Poachers.



Hannah
New

Hannah is a brave warrior and diplomat from the nearby city of Wasson. She's been sent to the City by the Sea to set up trade relations. Realizing that there's a corrupt government and evil renegades, she teams up with Jack Tenrec to do battle. Hannah is also quite a warrior, and she'll do battle against anyone who attempts to harm science and nature. She comes packed with her Double Shortcross Bow Weapon and Missile.



FIGURE ASSORTMENT



TYCO BOYS ACTION

Hammer Terhune
New

This gigantic man is the leader of the Poachers, the most ruthless and dreaded renegades in civilization. This brutal band of killers trap and kill animals for both pleasure and profit. And they'd love to destroy Jack Tenrec and the Mechanics! Outfitted in camouflage gear, Hammer looks extremely scary with the trademark face paint of all Poachers. He is packed with his patented Hammer Slammer Weapon Launcher and Missile, along with his Dino Trap for killing dinosaurs.



Vice Terhune
New

Vice Terhune is Hammer's brother and first lieutenant. Vice doesn't have Hammer's strength or cruelty, but he's scheming and ambitious and wants to secretly supplant Hammer as the leader of the Poachers. Outfitted in the buckskin of a slain dinosaur, Vice is evil-looking with his trademark face paint. He comes packed with his patented Harpoon Launcher Weapon and Missile, along with a Dino Buzz Saw for cutting up the bones of slain dinosaurs.



Hermes
New

This Deinonychus (a smaller version of T-Rex) is Jack Tenrec's pet and the watchdog over his Garage. Hermes is packed with leg and arm weapons to aid Jack in his battles and in protecting the Garage from intruders.



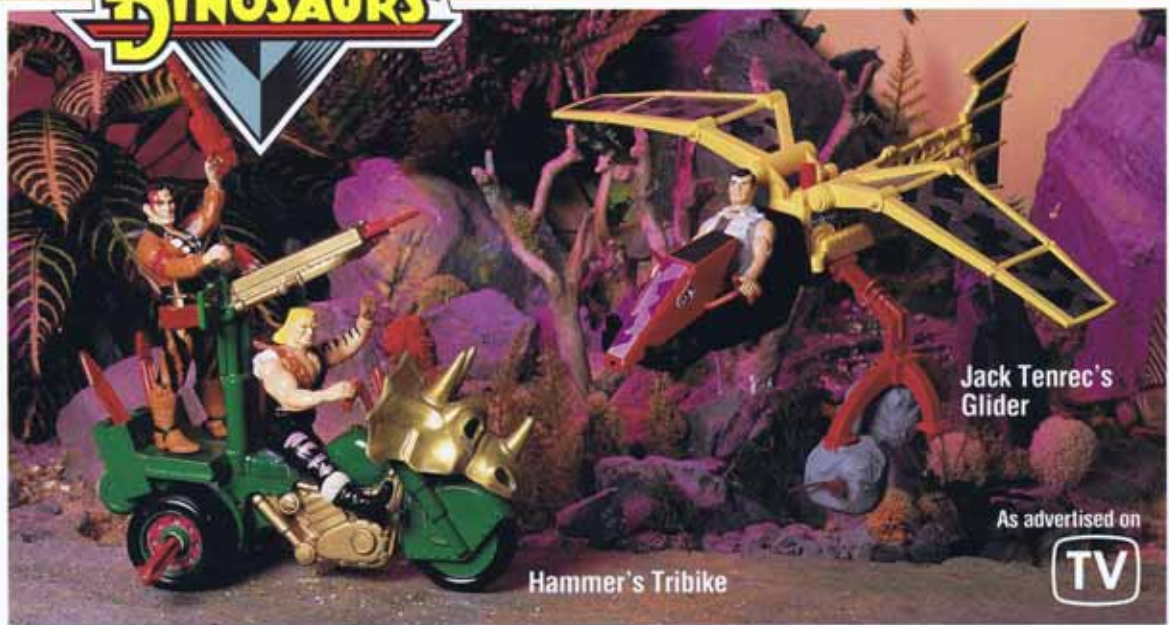
The Zeke
New

The Zeke (or Quetzalcoatlus) has been domesticated to use as a message carrier between the villages. It is packed with a message-carrying backpack that holds 2 secret scrolls and a special decoder for analyzing secret messages. If attacked, it also has a Log Launcher which can drop 2 log bombs on the evil Poachers below.





SMALL VEHICLE ASSORTMENT



Jack Tenrec's Glider

Hammer's Tribike

As advertised on



Cadillacs & Dinosaurs™ Small Vehicle Assortment

No. 1307 **New**



Jack Tenrec's Glider

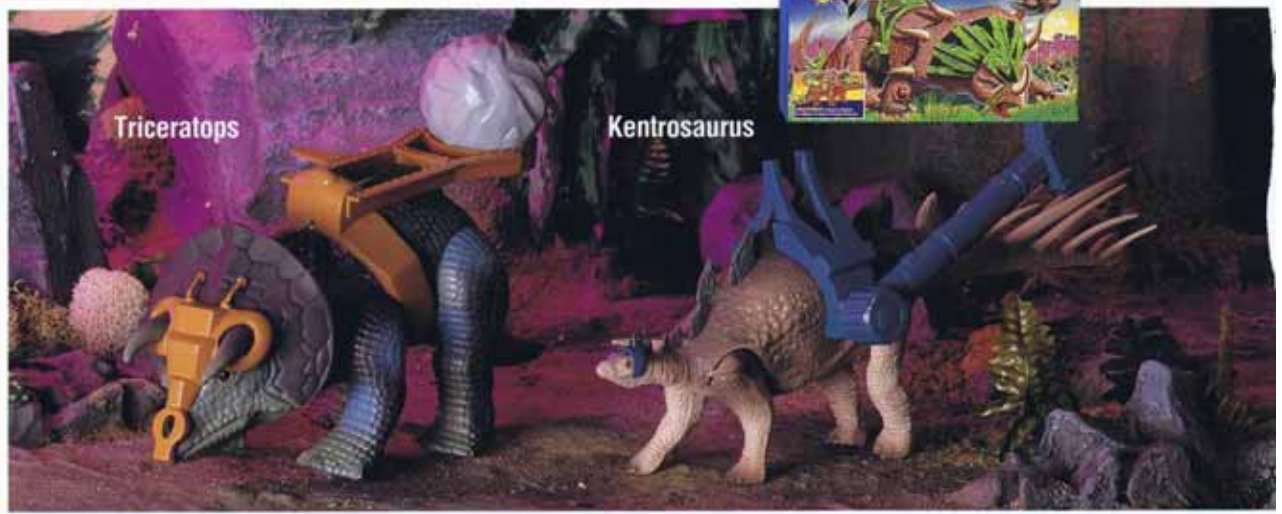
When the terrain is too risky for a wheeled vehicle or when he wants to sneak up and ambush a band of Poachers, Jack uses his Glider. It's a kid-powered vehicle that holds one figure. The wings can be positioned in either the glide mode or aggressive attack mode. Depressing the button on top of the Glider activates spring-loaded claws that carry and release rock bombs on the Poachers below. When not carrying rock bombs, the Glider can fly low, pick up a figure and fly it to safety. Figures sold separately.

Hammer's Tribike™

The Terhune brothers wreak havoc in the Tribike™. It's a free-wheeling vehicle that holds 2 figures—1 driving and 1 standing. Depress the button on top of the vehicle to release a Harpoon Missile from the launcher. The Tribike comes with 5 missiles: 2 are stored in the rear bin for easy access, 1 is shot from the Missile Launcher and 2 double as Rear Wheel Tire Slashers that can be pulled out and fired from the launcher. There is also a Dino Skull Ornament—a trophy from one of Hammer Terhune's dinosaur hunts. Figures sold separately.

Standard Pack: 12 • Carton Weight: 6 lbs.
Cube: 0.8 • Package Size: 7" x 3½" x 9"

LARGE DINOSAUR ASSORTMENT



Triceratops

Kentrosaurus





LARGE VEHICLE ASSORTMENT



As advertised on



Cadillacs & Dinosaurs™ Large Vehicle Assortment

No. 1332 **New**



Jack's Cadillac

Jack's favorite vehicle is his 1950's Cadillac. Because of its durability, the Cadillac was able to survive 500 years underground; now, it's maintained by Jack in his Garage and is used not only as a free-wheeling vehicle, but also as a tough fighting machine to battle the Poachers.

Jack's Cadillac holds 2 figures and has secret hidden weapons built into the body. Depress the hood scoop to fire 2 missiles from the spring-loaded Missile Launcher. The trunk pops open to fire out a net trap that will capture any Poacher in sight. Jack's Cadillac also includes 2 Lava Guns that are loaded on each side of the vehicle. Slide forward the buttons on top of the guns to release clear lava fire and scorch those evil Poachers! Figures sold separately.

Standard Pack: 6 • Carton Weight: 13 lbs. • Cube: 1.5 • Package Size: 8 1/4" x 3 1/2" x 13"



Fires twin bumper blasters.



Launches net trap.

Cadillacs & Dinosaurs™ Large Dinosaur Assortment

No. 1322

New



Triceratops

The Triceratops, known as large "macks," have been domesticated by the settlers and farmers to help rebuild the villages. To protect the village from attacking Poachers, each is equipped with a large Rock Launcher to thwart the attackers.

Kentrosaurus

The Kentrosaurus has been trapped by the Poachers and are used for their evil purposes. Each is equipped with a Giant Lever Arm that can be used for destroying villages, vehicles, or attacking Jack's Garage.

Figures sold separately.

Standard Pack: 12 • Carton Weight: 13 lbs. • Cube: 2.5 • Package Size: 7 1/2" x 3 1/2" x 13"



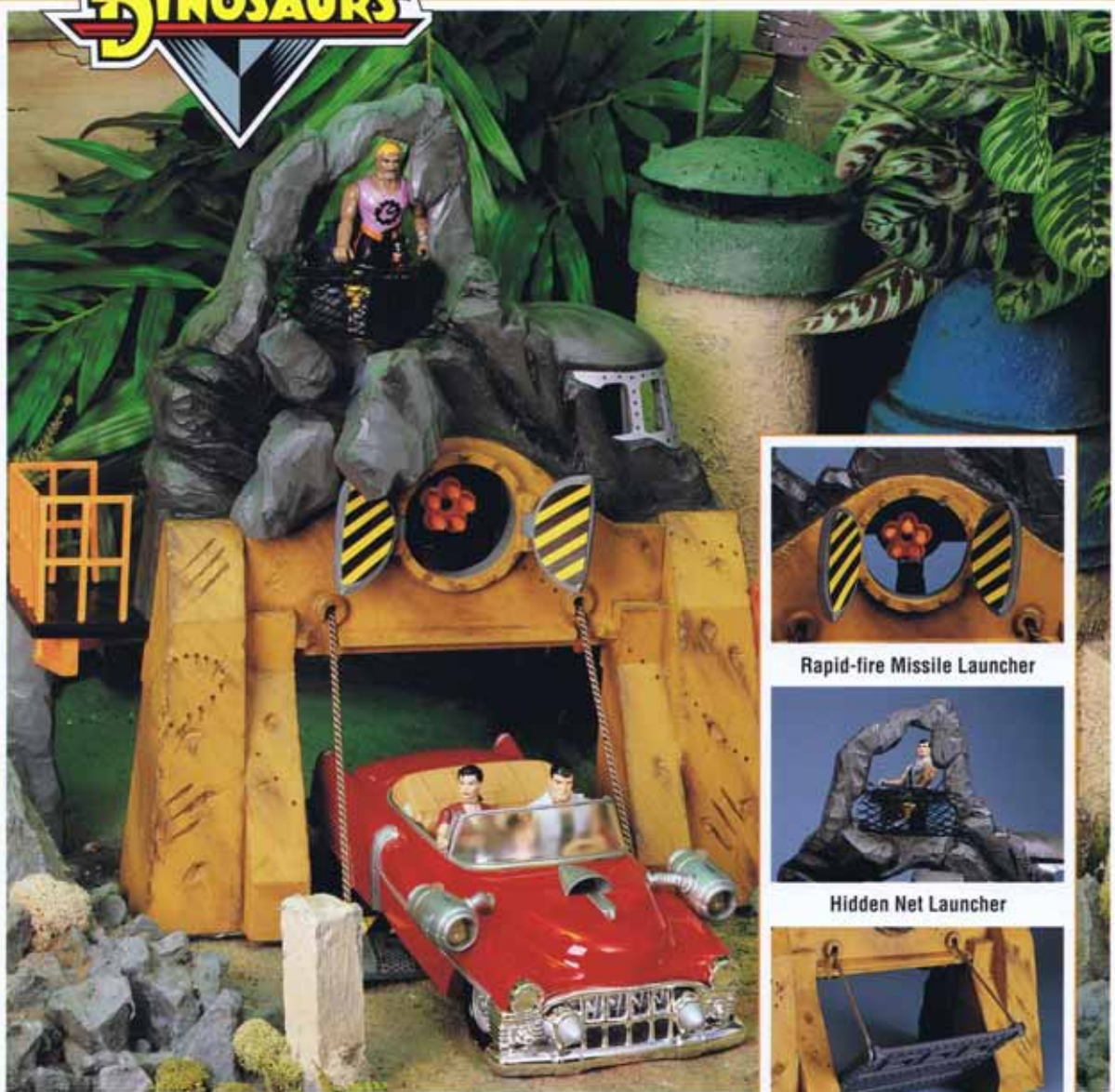
Triceratops



Kentrosaurus



JACK'S GARAGE PLAYSET



Rapid-fire Missile Launcher



Hidden Net Launcher



Working Drawbridge

Jack's Garage Playset **New**
 No. 1337 **New**

As advertised on



Standard Pack: 4 • Carton Weight: 12 lbs.
 Cube: 2.6 • Package Size: 13 1/4" x 4" x 20"

The Garage is Jack's ultimate command center and repair shop. It is the base of his operations and houses all of his vehicles and weapons. In times of attack, it serves as a solid fortress outfitted with weaponry and other action features.

When the Garage is attacked, the gun doors open to reveal an awesome rapid-fire Missile Launcher, sure to eliminate any Poacher in its path. In addition, the Garage has falling boulders that crash down on any enemy who tries to take over. The boulders expose a Net Launcher that fires a trap to snare the villains. A drawbridge lowers to allow Jack's Cadillac, or any vehicle, to be driven into the Garage for repairs and storage.

The inside of the Playset reveals Jack's command center, living quarters, and repair shop where he fixes vehicles and machinery. There are mechanical hoses and a lava power source that fuels the Garage. The Playset is also large enough to hold several figures and a vehicle for nonstop play and fighting action. Figures and vehicles sold separately.





NITRO EXPRESS™

TYCO BOYS ACTION



6 AMMO CLIPS WITH SOFT, SAFE MISSILES

Nitro Express™

No. 1347

New



As advertised on



Kids love to act out the fantasy of their favorite heroes through role playing toys. With the Nitro Express gun, kids become Cadillac Jack Tenrec. The awesome gun is the actual replica of Jack's Nitro Express weapon. It is battery-operated and blasts out 6 foam missiles in rapid-fire succession. That's some awesome firepower! Operates on 4 "AA" batteries, not included.

Figures sold separately.

Standard Pack: 6 • Carton Weight: 14.5 lbs.

Cube: 2.9 • Package Size: 11" x 4" x 18"



Copyright © Mark Schultz. Cadillac, Cadillac Script, Cadillac Crest and "V" Emblem, various automobile body style designs, Cadillacs and Dinosaurs are trademarks of General Motors Corporation and are used under license by Tyco.

THE SMITHSONIAN INSTITUTION
 NATIONAL MUSEUM OF NATURAL HISTORY
DINOSAUR
 AND PREHISTORIC REPTILE
 C O L L E C T I O N

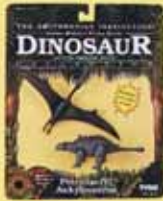
Fully authorized by the Smithsonian Institution and the National Museum of Natural History.

Smithsonian Dinosaur Assortment I

No. 9119

NEW

Smithsonian Assortment I contains 9 realistic dinosaurs, including 2 new dinosaurs—*Chasmosaurus*, *Prosaurolophus*, *Struthiomimus*, *Protoceratops*, *Sabertoothed Cat*, *Dimetrodon*, *Pteranodon*, *Monoclonius* and *Styracosaurus*.



Struthiomimus



Chasmosaurus



Dimetrodon

Standard Pack: 24 (3 of each)
 Carton Weight: 8 lbs.
 Cube: 2.2 • Package Size: 9" x 11" x 3"



Monoclonius



Protoceratops



Pteranodon



Prosaurolophus



Sabertoothed Cat



Styracosaurus

Presenting an expanded collection for 1994 of some of the most life-like dinosaur replicas you've seen in 65 million years — authenticated by the Smithsonian Institution's National Museum of Natural History. From all the dinosaurs who once roamed the Earth, Tyco® has chosen the all-time favorites, including Ice Age Mammals.

They are faithfully reproduced scale models authenticated in 1/24 size, except for two at different scales. Each prehistoric reptile and Ice Age Mammal is articulated so it can be posed in many realistic positions.

Smithsonian Dinosaur Assortment No. III, Including Ice Age Mammals

No. 9144

NEW

Smithsonian Assortment III consists of 4 dinosaurs, including, 1 new dinosaur— *Edmontonia*, Woolly Mammoth, *Stegosaurus* and *Triceratops*.

Standard Pack: 12 (3 of each)

Carton Weight: 15 lbs. • **Cube:** 4.5

Package Size: 10 3/4" x 4 1/2" x 13"



Stegosaurus

Stegosaurus, a plant-eating dinosaur with moveable legs. Special attention to detail includes realistic bony plates on the neck and back, and four bony spikes on the tail. And look into his life-like eyes! Can this creature be alive?

Edmontonia

Featuring moveable limbs that are short and massive together with heavy armor on its back, *Edmontonia* was undoubtedly one of the sturdiest animals among the plant-eating dinosaurs. With its shoulder spikes and elongated tail, *Edmontonia* probably stood its ground against attacking predators.



Triceratops

Authentically reproduced from beak to tail, *Triceratops* has been brought back to life with three-horned face and bony frill over its neck. It also has moveable, poseable legs.



Woolly Mammoth

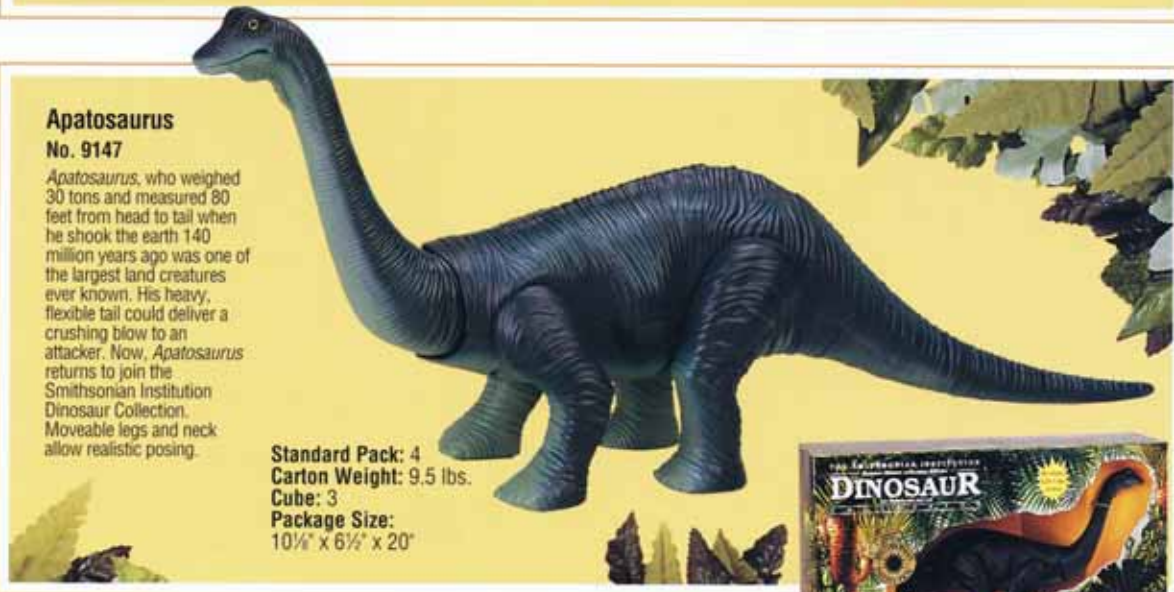
One of the last survivors of the Ice Age, the *Woolly Mammoth* was hunted by early man. Mammoths had a high domed head and long, dense black hair. Carefully recreated for this Smithsonian collection, the *Woolly Mammoth* features moveable head, trunk and legs.

Apatosaurus

No. 9147

Apatosaurus, who weighed 30 tons and measured 80 feet from head to tail when he shook the earth 140 million years ago was one of the largest land creatures ever known. His heavy, flexible tail could deliver a crushing blow to an attacker. Now, *Apatosaurus* returns to join the Smithsonian Institution Dinosaur Collection. Moveable legs and neck allow realistic posing.

Standard Pack: 4
Carton Weight: 9.5 lbs.
Cube: 3
Package Size: 10 1/2" x 6 1/2" x 20"



THE SMITHSONIAN INSTITUTION
 NATIONAL MUSEUM OF NATURAL HISTORY
DINOSAUR
 AND PREHISTORIC REPTILE
 C O L L E C T I O N

Fully authorized by the Smithsonian Institution and the National Museum of Natural History.

Tyrannosaurus
 No. 9149

This tyrant reptile was the biggest flesh-eating land animal that ever lived! Hind legs and tiny forelimbs are moveable; as is the jaw. This model can be posed to simulate a living *Tyrannosaurus* as it stalked the earth in search of prey.



Tyrannosaurus



Standard Pack: 2
 Carton Weight: 8 lbs. • Cube: 3
 Package Size: 13" x 10" x 19½"

Smithsonian Dinosaur Assortment II
 Including Ice Age Mammals
 No. 9128

NEW

Smithsonian Assortment II, including Ice Age Mammals, includes 8 authentic dinosaurs (2 per box), including 2 new dinosaurs. The assortment consists of 3 each of *Pteranodon* / *Chasmosaurus*, *Pterodactylus* / *Prosaurolophus*, *Sabertoothed Cat* / *Giant Ground Sloth* and *Styracosaurus* / *Dimetrodon*.



Standard Pack: 12 (3 of each pair)
 Carton Weight: 10 lbs. • Cube: 2.5
 Package Size: 8½" x 3" x 13"



Dimetrodon



Giant Ground Sloth



Pterodactylus

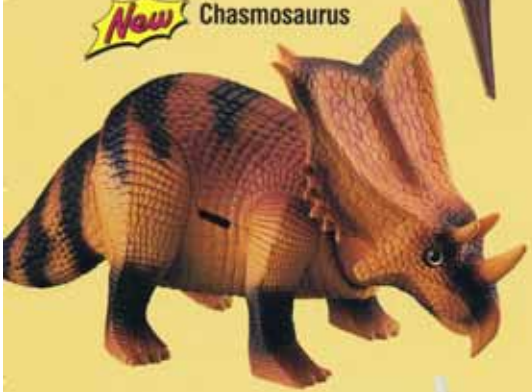


Pteranodon

Pteranodon and Chasmosaurus

Awesome *Pteranodon* with wings that flap and toothless jaws that move. With moveable head, legs and tail, *Chasmosaurus* is a three-horned dinosaur with a large bony frill at the back of the skull. Typical of a large, ponderous reptile, the legs are very solidly built—designed for weight-bearing, not speed.

New Chasmosaurus



New

Prosaurolophus

Pterodactylus and Prosaurolophus

Pterodactylus, one of the earliest short-tailed flying reptiles, has flapping wings and moveable, elongated jaws. Featuring movable arms and legs, *Prosaurolophus* was able to walk erect on its hind legs, the body being beautifully counterbalanced at the hips by the long tail. This duck-billed dinosaur had a prominent bony crest on the top of its skull that ended in a small spike.

Styracosaurus and Dimetrodon

Six-spiked *Styracosaurus* with moveable head, legs and tail. Sail-backed *Dimetrodon*, a mammal-like reptile, with large, slashing teeth and snapping-action jaw.



Styracosaurus

THE SMITHSONIAN INSTITUTION
NATIONAL MUSEUM OF NATURAL HISTORY
ICE AGE
MAMMAL
COLLECTION

Sabertoothed Cat and Giant Ground Sloth

These two Ice Age Mammals once roamed the Americas. Named for his sword-like teeth, the 600-pound Sabertoothed Cat was very heavily built. The 20-foot Giant Ground Sloth walked on its knuckles and reared on its strong tail to devour foliage from trees. Both mammals now return with moveable heads and legs.

Sabertoothed Cat



No. 9128
Standard Pack: 12 (3 of each pair)
Carton Weight: 10 lbs. • Cube: 2.5
Package Size: 8 1/2" x 3" x 13"